

J. Scott Andrews
Commission Chair

August 2, 2010

Bertha Ferrán
Commissioner

Mr. Ray LaHood, Secretary
Secretary of Transportation
U. S. S Department of Transportation
1200 New Jersey Avenue SE
Washington, DC 20590

John C. Mohlis
Commissioner

RE: Southeast Corridor Project: Connecting Communities Transportation Investment
Generating Economic Recovery II Grant Proposal

Steven Straus
Commissioner

Dear Secretary LaHood:

Charles A. Wilhoite
Commissioner

The Portland Development Commission is committing our full support for the Southeast Corridor Project: Connecting Communities Transportation Investment Generating Economic Recovery (TIGER) II Grant Proposal. This Proposal will supplement regional transit investments and enhance the safe and reliable movement of freight, commuters, employees and visitors to and from one of Portland's most vital working districts.

Sam Adams
Mayor

Bruce A. Warner
Executive Director

The SE Water Avenue Relocation supports new multi-modal connections to educational institutions, employment, cultural attractions and bicycle and pedestrian facilities. It also protects freight mobility and creates Brownfield redevelopment opportunities in the Central Eastside Urban Renewal Area (east bank of the Willamette River).



www.pdc.us

222 Northwest
Fifth Avenue
Portland, OR
97209-3859

tel: 503.823.3200
fax: 503.823.3368
TTY: 503.823.3366

Over 17,000 jobs and 1,100 businesses are located in this industrial sanctuary with major rail and street routes for freight using this major artery to ship goods throughout the country. This critical employment center also provides continuing education and job training at Portland Community College's Continuous Learning for Individuals, Management and Business (CLIMB) Center for Advancement, for healthcare professionals, small business development, organizational development, and those seeking to enhance their job skills. In addition, this project provides connections to major bicycle and pedestrian routes and improves safety for the more than 900,000 annual visitors to the Oregon Museum of Science and Industry.

In addition, the Oregon Pacific Railroad and Yard Improvements allow for the relocation of four steam engines from the Union Pacific Railroad's Brooklyn Yard, providing space for the expansion at that key intermodal facility. Both of these project improvements are critical to supporting freight movement in this industrial neighborhood. Integrating our transportation investments with the existing infrastructure and economic development opportunities is a critical goal of the project.



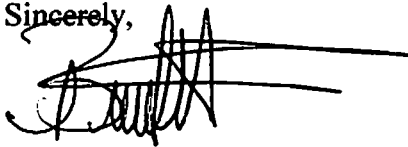
Mr. Ray LaHood, Secretary
Page 2 of 2
August 2, 2010

The project will prepare this working district for the opportunities regional transit investments bring. Ensuring consistent, reliable traffic flow, whether of freight, transit riders, cyclist or pedestrians, is essential to the future success of the district and the many businesses and institutions sited there.

The requested TIGER II grant funds will leverage local and regional funds as a local match that can assist the region's economic recovery. The project also will create efficiencies by combining construction of the improvements with the Portland-Milwaukie Light Rail Transit Project.

Portland Development Commission believes the Southeast Corridor Project: Connecting Communities Project will encourage a thriving business environment and we wholeheartedly urge you to award funding to this vital initiative.

Sincerely,

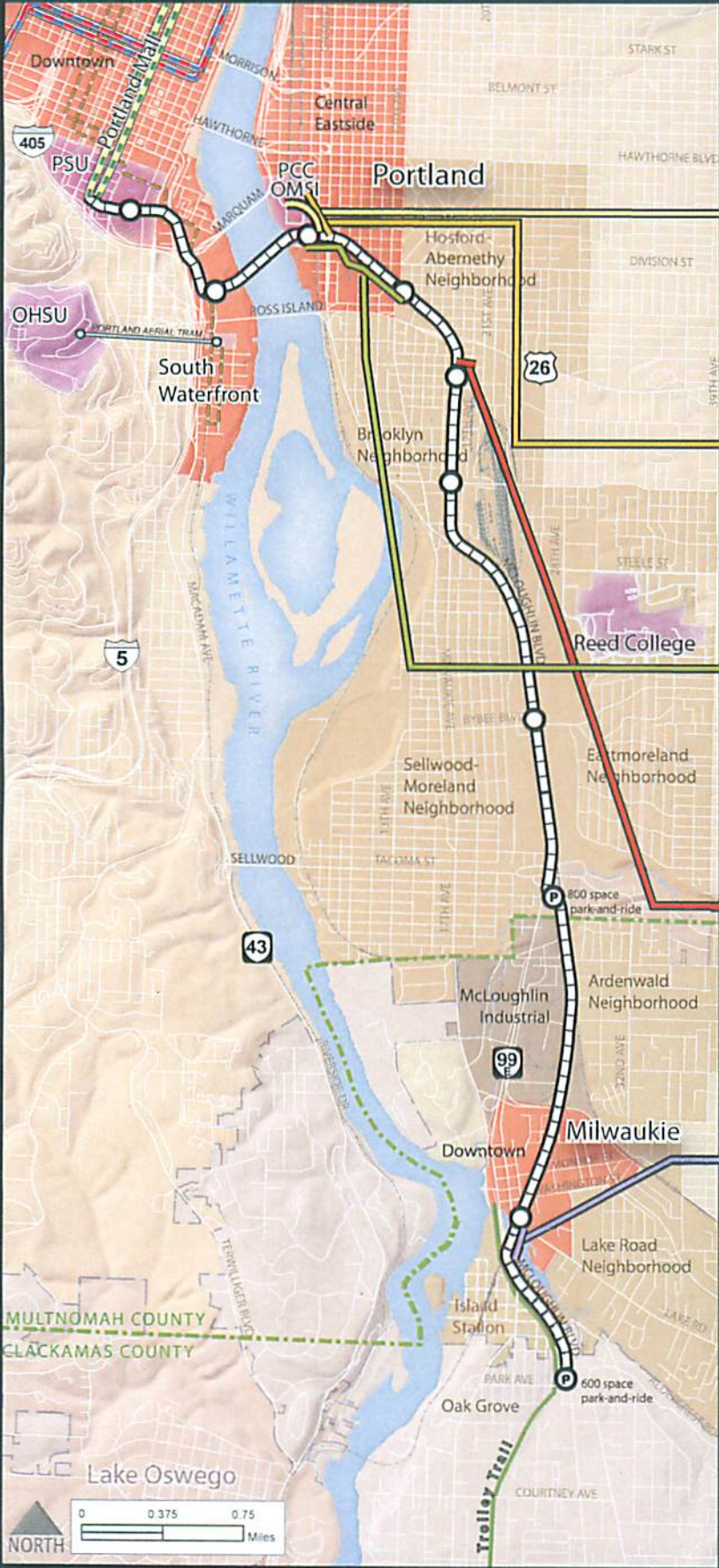
A handwritten signature in black ink, appearing to read "Bruce A. Warner", with a long horizontal line extending to the right.

Bruce A. Warner
Executive Director

BAW:TL:tag

Attachment

Southeast Corridor Project: Connecting Communities



This project includes a series of transportation investments to create more livable and connected communities in the Southeast Corridor.

SE Water Ave. Relocation
Protects and enhances freight mobility while supporting new multimodal connections to jobs and cultural and educational institutions. Connects to local and regional bike and pedestrian routes, and creates redevelopment opportunities.

Oregon Pacific Railroad and Yard improvements
Provide room for the SE Water Avenue project, and allow for the relocation of four steam engines from Union Pacific Railroad's crowded Brooklyn Yard.

Clinton to the River Multi-use Path
Provides a critical connecting hub for the region's bicycle and pedestrian network, linking dense, vibrant neighborhoods with employment, educational institutions and major bike and pedestrian routes.

Rhine Pedestrian Bridge
Addresses safety concerns with the existing antiquated bridge, and enhances bike and pedestrian connections between neighborhoods, schools, employment centers and transit.

Kellogg Lake Pedestrian and Bicycle Bridge
Addresses hazards of illegally crossing an adjacent freight rail trestle, and establishes a vital link in the local and regional bike and pedestrian network. The new bridge would enhance access to schools, transit and downtown Milwaukie.